

GUARDING AI SYSTEMS AGAINST BIAS

ABOUT ETHICASHIELD

EthicaShield: Your Guard Against AI Bias

In a world increasingly driven by AI, ensuring fairness is essential. EthicaShield provides the key to ethical AI use, detecting and mitigating algorithmic bias within your models and data. Our advanced platform uncovers potential biases and offers actionable tools to correct them. EthicaShield is suitable for organizations of any size with a user-friendly design and customizable reporting.

Choosing EthicaShield means valuing transparency, accountability, and fairness in AI. Embrace EthicaShield and help make algorithmic bias a thing of the past.



FEATURES



Bias Detection

Advanced machine learning techniques to detect and highlight potential biases in data and AI model outputs. This helps ensure fairness and equity in your AI systems' results.



Model Transparency

Provides clear, easy-to-understand explanations of how AI models make decisions. This transparency helps users understand the inner workings of the models and builds trust in the system.



Customizable Reporting

Generate customizable reports detailing the biases found, potential impacts, and actions to mitigate them. This supports better decision-making and keeps stakeholders informed.



User-friendly Interface

EthicaShield has an intuitive, easy-to-use interface that simplifies the complexity of AI bias detection and mitigation, making it accessible for all users, irrespective of their technical expertise.



Bias Mitigation

Automated bias mitigation strategies can be applied once biases are detected. These algorithms adjust your models and data, reducing or eliminating the identified bias.



Real-time Monitoring

Offers continuous real-time monitoring of AI systems to detect biases as they emerge, enabling timely intervention and correction.



Scalable Solution

Whether you're a small startup or a larger corporation, EthicaShield is built to scale and grow with your needs. As your data grows, so does your ability to monitor and correct for bias.



Integration Capabilities

Easy integration with existing data systems and AI models to ensure seamless bias detection and mitigation without disrupting your current operations.

How EthicaShield Works



Step 1: Integration

EthicaShield is designed to seamlessly integrate with your existing systems. Simply plug it into your data sources and AI models, and you're ready to start the bias detection process.

Step 2: Data Analysis

EthicaShield's advanced algorithms analyze your data and models. It identifies biases in training data, model predictions, or both. This thorough examination ensures all potential bias sources are uncovered.

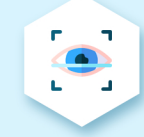


Step 3: Bias Detection

Our platform leverages state-of-the-art machine learning techniques to detect and highlight any existing biases. You'll receive a detailed bias report identifying potential fairness issues within your system.

Step 4: Bias Mitigation

Once a bias is detected, EthicaShield offers automatic bias mitigation strategies. These algorithms adjust your models and data to reduce or eliminate the detected bias, ensuring fairness in your AI systems.



Step 5: Transparency Report

EthicaShield provides an easy-to-understand transparency report explaining how your AI models make decisions. You can use this report to build trust with stakeholders by demonstrating your commitment to ethical AI practices.

Step 6: Continuous Monitoring

With EthicaShield's real-time monitoring feature, your AI systems are continuously watched for new biases. If a potential bias is detected, you'll be alerted immediately, enabling quick action.



Step 7: Customizable Reporting

Keep all stakeholders informed with customizable reports detailing detected biases, their potential impacts, and the steps taken for mitigation. These reports support effective decision making and continuous improvement of your AI systems.



User Input

Description: Users seamlessly integrate their existing AI models and data sources with EthicaShield.



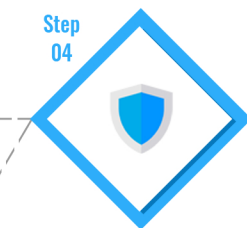
Data and Model Analysis

EthicaShield's algorithms analyze the integrated data and models, searching for potential biases.



Bias Detection

State-of-the-art machine learning techniques detect and highlight any existing biases within the data or model predictions.



Bias Mitigation

Once biases are detected, EthicaShield offers automated mitigation strategies, modifying models and data to reduce or remove detected biases.



Transparency Report

EthicaShield generates a comprehensive transparency report detailing how AI models make decisions, highlighting any detected biases and the mitigation steps taken.



Continuous Monitoring

EthicaShield monitors the AI systems in real-time, alerting users immediately when potential biases emerge and ensuring ongoing protection.



Customizable Reporting

Users can generate customizable reports detailing biases found, potential impacts, and mitigation actions, keeping stakeholders informed and enabling continuous improvement of AI systems.

